

CHARMILL

RESIDENTIAL



Chippenham Road, Maida Vale, W9

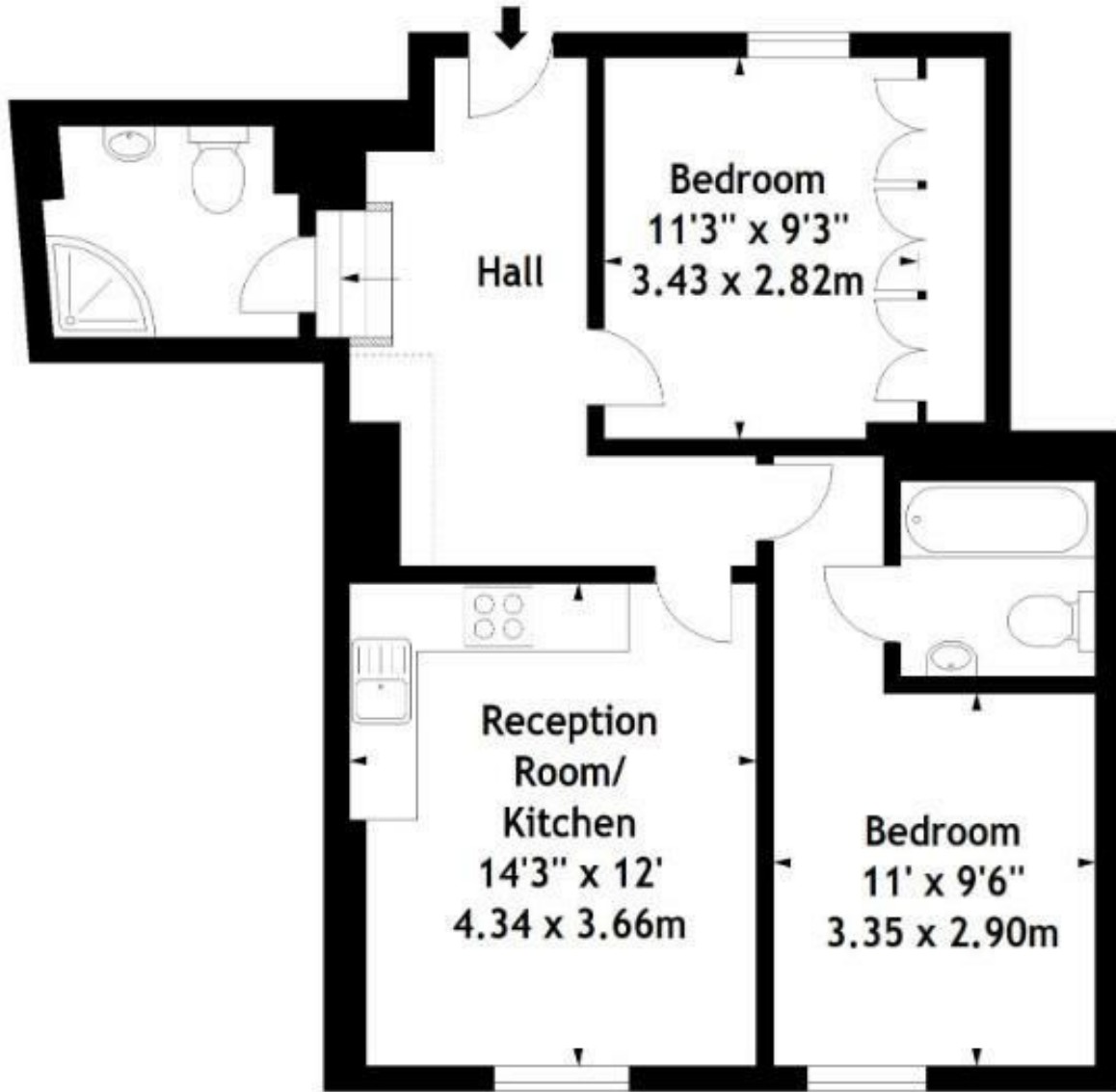
A recently refurbished two-bedroom, two-bathroom first floor apartment moments from local amenities and within easy reach to Warwick Avenue and Maida Vale stations (Bakerloo line). The property comprises an open plan kitchen/reception room with wooden floor, two double bedrooms and two bathrooms.

- Two bedroom's
- Two bathrooms
- First Floor
- Recently refurbished
- Open plan kitchen/reception

£554

Chippenham Road, W9

Approx. Gross Internal Area
658 Sq Ft - 61.13 Sq M



First Floor

Energy Efficiency Rating		Current	Potential
Very energy efficient - lower running costs			
(92 plus) A			
(81-91) B			
(69-80) C			
(55-68) D			
(39-54) E			
(21-38) F			
(1-20) G			
Not energy efficient - higher running costs			
		70	74
England & Wales		EU Directive 2002/91/EC	

Environmental Impact (CO ₂) Rating		Current	Potential
Very environmentally friendly - lower CO ₂ emissions			
(92 plus) A			
(81-91) B			
(69-80) C			
(55-68) D			
(39-54) E			
(21-38) F			
(1-20) G			
Not environmentally friendly - higher CO ₂ emissions			
		66	70
England & Wales		EU Directive 2002/91/EC	

